

HP Embedded Web Server EWS on HP Officejet Pro 8500 Series All-in-Ones -- Technical Backgrounder

Manage devices remotely with your web browser



Table of contents:

What is it?	2
Information tab.....	4
Settings tab.....	5
Networking tab.....	6
Summary	6



What is it?

The HP Embedded Web Server (EWS) included in the HP Officejet Pro 8500 series AiO provides a universal interface to the printer that anyone with a network connected PC and a standard Web browser can easily access, regardless of the operating system. This EWS interface can be password-protected and is only available to users within the business or enterprise firewall. It requires no special software to install or configure. The Embedded Web Server allows you to display status information, change settings, and manage the printer from your computer. It is similar to the embedded web server found in HP LaserJet printers.

The Embedded Web Server requires a connection to the network, so the AiO must be connected to your network with the built-in wired Ethernet or wireless connection (if available). To use the embedded Web server, you need the following:

- An HP Officejet Pro 8500 series AiO
- A TCP/IP-based network (IPX/SPX-based networks are not supported)
- A Web browser (either Microsoft Internet Explorer 6.0 or higher, Mozilla Firefox 1.0 or higher, Opera 8.0 or higher, or Safari 1.2, or higher)
- A network connection, either wired or wireless (you cannot use the embedded Web server connected directly to a computer with a USB cable)

In addition to EWS, the HP Officejet Pro 8500 series AiO also supports these tools:

- HP Easy Printer Care Software (for unmanaged environments)
 - No IT? No problem. HP Easy Printer Care Software allows you to easily monitor, maintain, and troubleshoot your all-in-one¹, control color costs, and reorder HP supplies. The software supports up to 20 HP devices, including most HP LaserJet devices and a wide variety of inkjet devices. Learn more at www.hp.com/go/epc.
- HP Web Jetadmin (for managed environments)
 - HP Web Jetadmin is the print management software that administrators around the world rely upon to install, configure, monitor, troubleshoot, and manage their printing and imaging devices from anywhere on the network. It helps companies save IT time and costs through proactive device management, and allows companies to utilize IT resources where they're most needed. Find out more info at www.hp.com/go/webjetadmin.

How does HP EWS benefit customers?

In managed IT environments EWS allows access to the device remotely, allowing administration as well as central monitoring. This is particularly useful when maintaining a large number of devices. Partnered with Web Jetadmin, administrators also have a wide variety of reporting options as well.

HP Web Jetadmin Software and the HP Embedded Web Server

HP's Web Jetadmin is a Web-based system management tool that you can use with a Web browser. The HP Embedded Web Server and Web Jetadmin work together to meet your product management needs. You can install and manage networked devices effectively. Network administrators can manage networked devices remotely, from practically anywhere.

The HP Embedded Web Server provides a simple, easy-to-use solution for one-to-one product management in environments that have a limited number of products. However, environments that have several products might want to use HP Web Jetadmin for group product management. With HP Web Jetadmin you can discover, manage, and configure multiple devices simultaneously.

HP Web Jetadmin is available for download from HP online support at www.hp.com/go/webjetadmin.

How does it work?

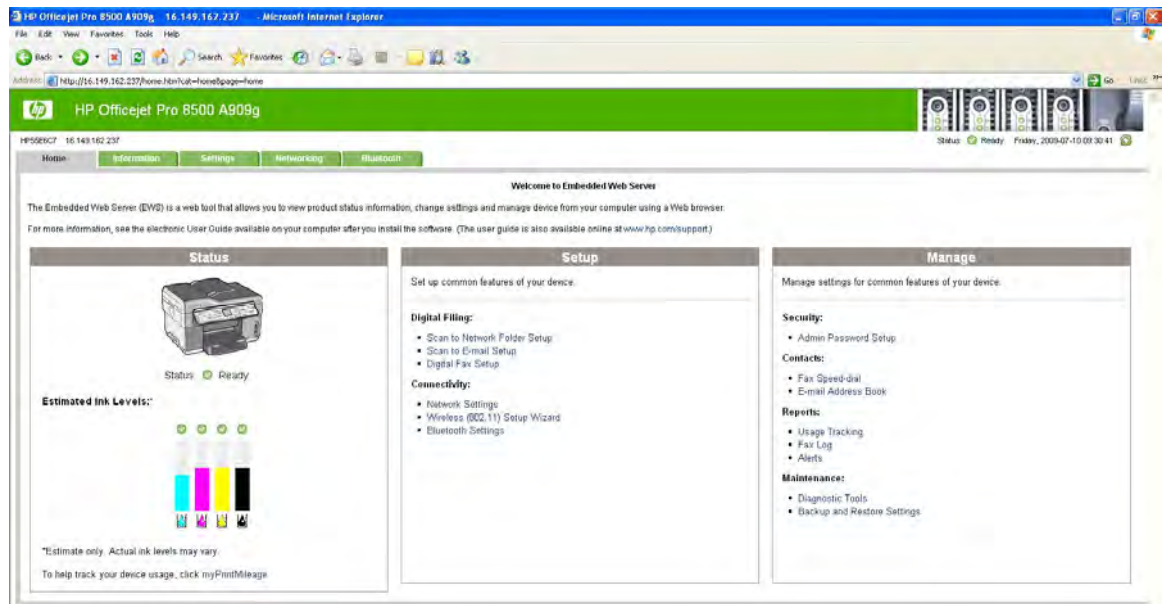
Accessing the HP embedded web server

In a supported Web browser on your computer, type the IP address assigned to the printer. For example: if the printer's IP address is 123.456.789.123, you would type "http://123.456.789.123" into your Web browser's **Address** or **Go to** field. The printer IP address is listed on the Configuration page. Note: you cannot view the embedded Web server pages from outside of a firewall.



HP Embedded Web Server pages

The embedded Web server has tabs that display detailed information about the printer and lets you change printer and network configuration remotely from your computer.



Pages/buttons	Contents
Home page	The Home page provides links to many commonly used functions.
Information page	Shows status information about the device, its ink supplies and usage, and a log of device events (such as errors). The device may display an approximation of the number of pages that can be printed with the existing supplies. This is only an approximation and the actual number of pages you can print may vary depending upon the images printed, print settings, paper type, frequency of use, temperature, and other factors. The approximation might change dramatically from printed page to printed page and is provided by HP for customer convenience. The approximation is not a promise or guarantee of future yield.

Settings page	Shows the settings that have been configured for the device and gives you the ability to change these settings. You can also save the settings and restore them if the device loses the settings.
Networking page	Shows network status and the network settings that have been configured for the device. These pages only appear if the device is connected to a network. For more information, see Configure network options.
Bluetooth page	Shows the Bluetooth settings that have been configured for the device and gives you the ability to change these settings.
Support and Order Supplies buttons	Support provides a number of support services. Order Supplies connects you to online ordering of supplies.

Information tab

The Information pages, detailed in the following table, provide a summary of the configuration and status of the printer and its supplies.

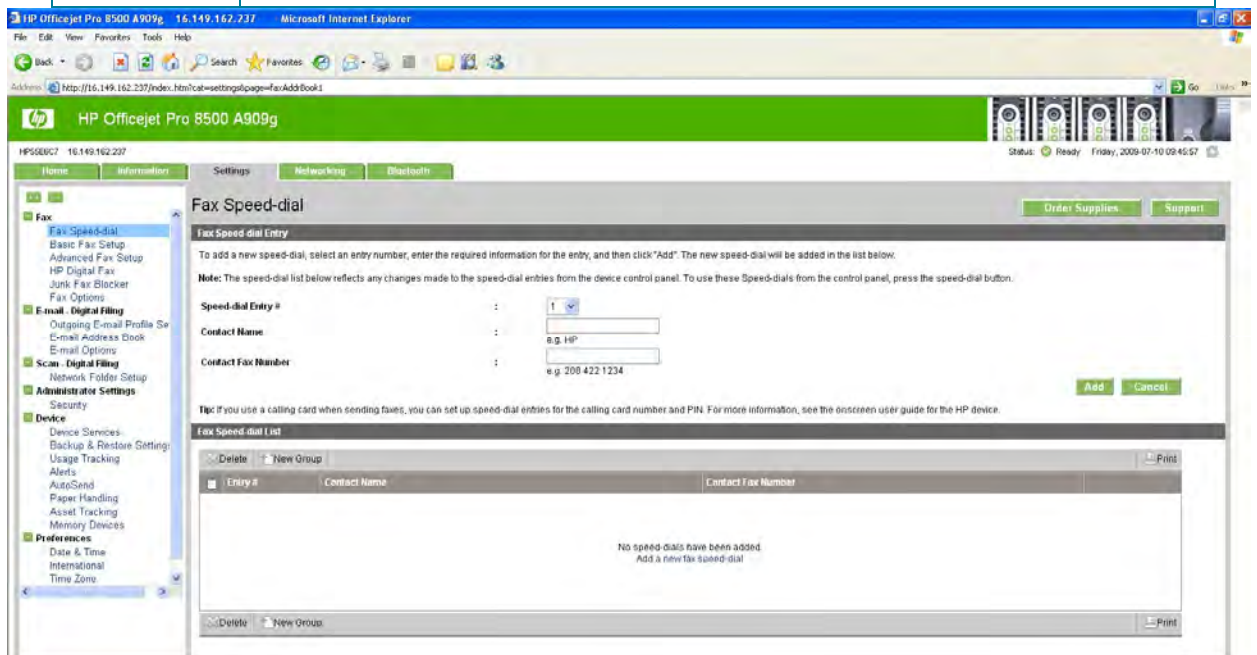
Overview	Displays information about the printer, such as the model, serial number, estimated ink levels, and network summary of the printer.
Status	Select Ink Supplies to see the current ink cartridge levels and printhead health status for the printer. Select Approximate Pages Remaining to see the estimated number of pages that can be printed with the remaining ink for full color, business color, or black text documents. This feature helps to estimate if the device has sufficient ink to complete print jobs with many pages. Usage Report tracks Estimated Accumulated Media and Ink Usage. Click Log to see the ten most recent events and errors in the printer event log. The most recent item appears at the top of the list. Fax log list faxes that have been sent from the device control panel and all faxes that have been received.
Application	Webscan is a feature of the embedded Web server that lets you scan photos and documents from your device to your computer using a Web browser. This feature is available even if you did not install the device software on your computer.
EWS settings	Allows you to change the language for the embedded Web server To display the most current device information in the EWS, set the refresh rate. When set, the Web browser refreshes the device information after the configured number of seconds.

The screenshot displays the HP Officejet Pro 8500 A909g Embedded Web Server (EWS) interface in a Microsoft Internet Explorer browser window. The address bar shows the URL: <http://16.149.162.237/index.htm?cat=infopage=printer&info>. The interface features a green header with the HP logo and printer model name. Below the header, there are navigation tabs for Home, Information, Settings, Networking, and Bluetooth. The main content area is titled "Device Information" and includes a left-hand navigation menu with options like Overview, Status, Applications, and EWS Settings. The "Status" section shows a printer icon and the text "HP Officejet Pro 8500 A909g" with a "Ready" status indicator. The "Estimated Ink Levels" section displays a color bar with four ink cartridges (Cyan, Magenta, Yellow, Black) and their respective levels. The "Items Needing Attention" section is currently empty. Below these sections, the "Details" section provides a table of device information, including Product Name, Product Model Number, Product Serial Number, Service ID, Asset Number/Location, Firmware Version, Automatic Two-Sided Printing Accessory, Admin Password, Total Page Count, Country/Region, and PCL Default Symbol Set. The "Ink Cartridge" section lists the supported ink cartridges and their part numbers.

Settings tab

The Settings pages, detailed in the following table, allow you to configure the printer from your computer. These pages can be password protected. Always consult with your network administrator before changing the printer configuration.

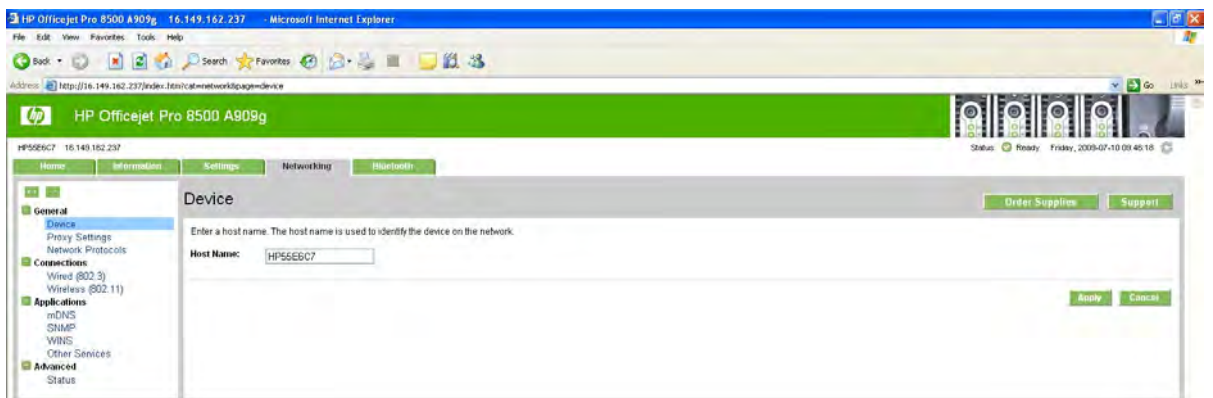
Fax, E-mail, Scan Settings	Shows the Fax, E-mail and Scan settings that have been configured for the device and gives you the ability to change these settings.
Administrator Settings	Lets you configure the password information and other security settings for the embedded Web server and e-mail alerts. This information should be configured by the network administrator only.
Device Settings	<p>Devices Services allows you to perform printer troubleshooting and maintenance tasks, such as running fax test, print network configuration page, aligning printheads, and cleaning printheads.</p> <p>Backup & Restore Settings allows you to save the settings and restore them if the device loses the settings.</p> <p>Usage Tracking tracks print job details to provide administrators with comprehensive real-time and statistical usage information. This information can be used by administrators to optimize printer deployment, workload, and the purchase of supplies. It allows administrators to track and monitor each users' usage (for example, the number of pages printed and black and color ink usage).</p> <p>Alerts allows you to set up the product to send problem and status alerts to anyone through e-mail messages. When this function is configured, alerts are automatically triggered about supplies, paper-path status, and other service and advisory information.</p> <p>AutoSend helps you understand your printing patterns. When you enable AutoSend, usage information is sent to HP. (To use AutoSend, you must first configure your e-mail settings in the embedded Web server.) HP uses the information sent by AutoSend in myPrintMileage. myPrintMileage provides smart tools and information that help you manage your printing activities and printer supplies.</p> <p>Paper Handling lets you configure the printer's media-handling settings.</p> <p>Asset Tracking lets you name the printer and assign an asset number.</p> <p>Memory Devices allows you to enable faster viewing of thumbnails of photos stored on a memory card on the control-panel display.</p>
Preferences	Lets you change the Date, Time, Time Zone and the language used for displaying information on the control panel and for printing device reports (such as the configuration page) of the printer.



Networking tab

The Networking pages allow the network administrator to configure the print server for the printer. This tab will not appear if the printer is connected to the network via a print server that is not an HP print server.

General	Allows you to set the printer host name used to identify it on the network, Proxy Server and IPv4/IPv6 Network protocols settings
Connections, Application	Allows you to manually set network connections, including advanced settings such as DHCP or Bootp methods for automatically obtaining the IP address; enabling or disabling network services and protocols such as Multicast Domain Name System (mDNS) services, Simple Network Management Protocol (SNMP), Windows Internet Naming Service (WINS), Line Printer Daemon (LPD), Service Location Protocol (SLP), raw IP printing through TCP Port 9100 and Microsoft Web Services Dynamic Discovery (WS Discovery) protocols or Microsoft Web Services for Devices (WSD) Print services
Advanced	Shows network status and the network settings that have been configured for the device.



Summary

The HP Embedded Web Server is inside the HP Officejet Pro 8500 series AiO (hardware and firmware), rather than software that is loaded on a network server. The advantage of an embedded Web server is that it provides an interface to the product that anyone who has a network-connected computer and a standard Web browser can open and use. And of course, a password can be set to control who has access. No special software needs to be installed or configured. With the HP Embedded Web Server, you can view product status information, change settings, and manage the product at your computer.

For more information on Officejet Pro, visit www.hp.com/officejetpro.

¹ HP Easy Printer Care Software supports up to 20 HP devices, including most HP LaserJet devices and a wide variety of inkjet devices. See printer compatibility www.hp.com/go/epc.