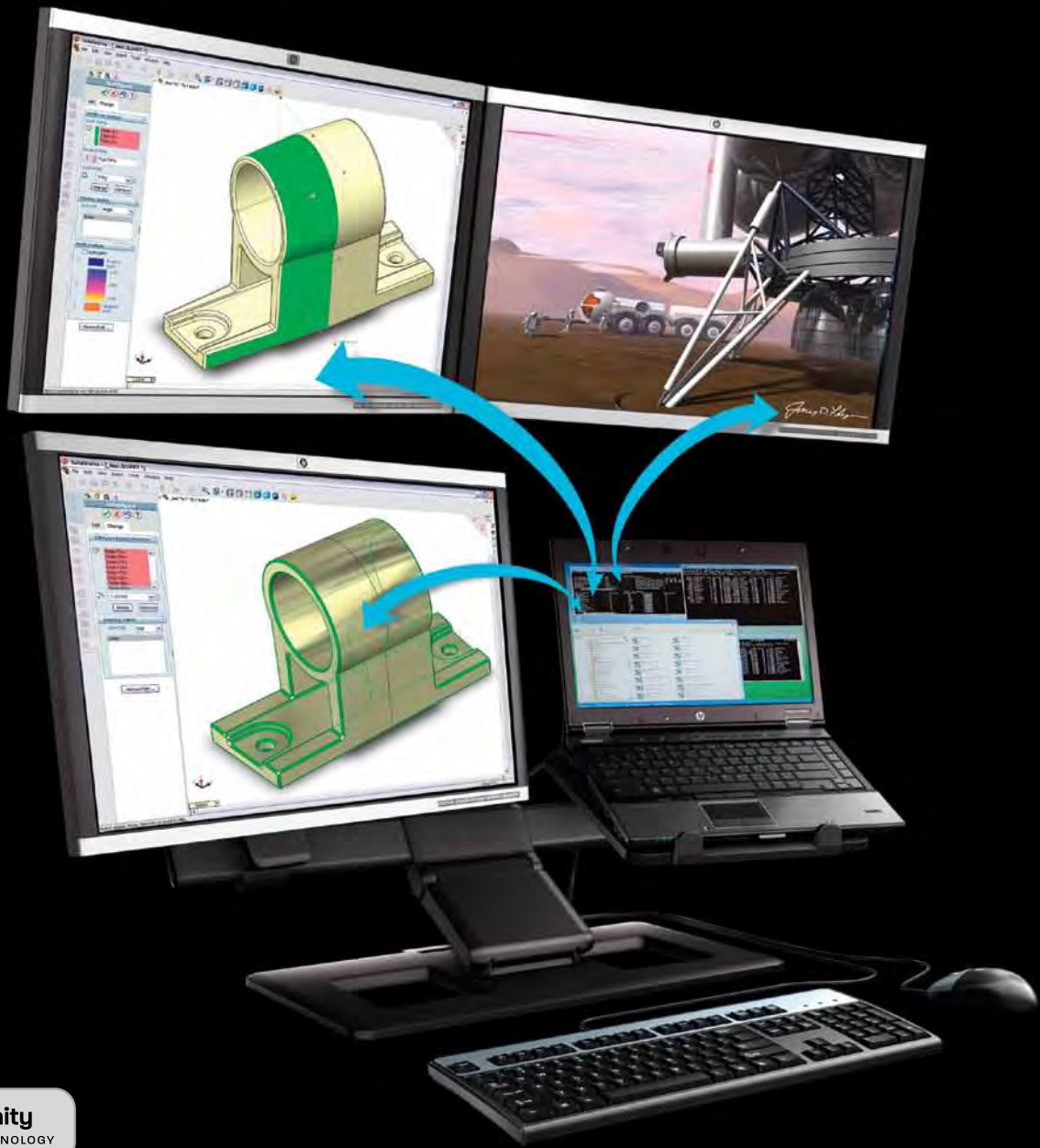




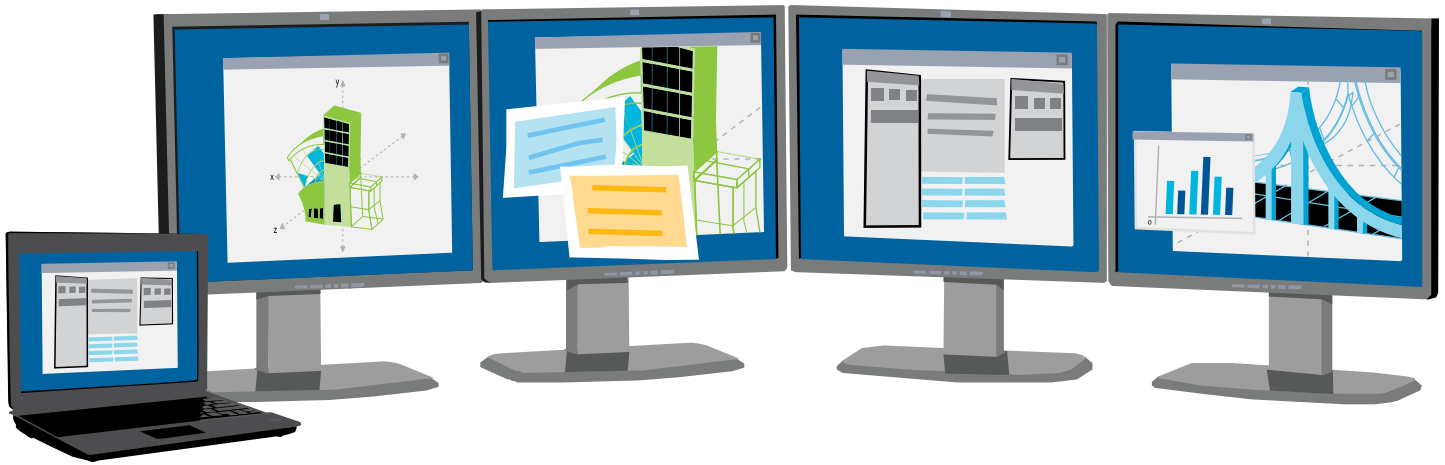
# EYEFINITY

EXPAND THE VIEW FROM YOUR MOBILE WORKSTATION.



AMD Eyefinity  
MULTI-DISPLAY TECHNOLOGY

TECHNOLOGY SPOTLIGHT  
LEADING TECHNOLOGIES FOR BUSINESS NOTEBOOKS



## THE CASE FOR MULTIPLE MONITORS

Have you ever struggled to complete a project because you're constantly switching between applications and windows on your notebook PC and shuffling printouts on your desk? All of this back-and-forth activity breaks visual continuity and decreases productivity.

To address this problem, some professionals use the mobile workstation panel for one display and a standalone widescreen monitor for a second display, while others plug into two external monitors to view more information faster. Either way, the use of two displays can certainly help increase productivity. Rather than constantly switching between different windows and hard-copy documents, you can keep reference documents and e-mail on one screen, while working on a spreadsheet or presentation on another screen.

But what happens if you need more than two screens? For some professionals—such as graphic artists, mechanical engineers, stock traders and some business users—having three or more displays would be incredibly helpful.

This is an opinion shared by many users. In an AMD-sponsored white paper, the research firm IDC concluded, "The benefits of multiple-monitor computing can be hard to quantify, but ask those who have used three or more monitors to work within a complex workflow environment, and you're likely to hear just how much they liked it. From increasing productivity to lowering frustration, in the right scenarios, a multiple-monitor workstation is simply the best way to work."<sup>1</sup>

So why don't more professionals take advantage of three, four or even five displays? Because of technical limitations. The typical graphics cards used in notebook PCs support the use of only two simultaneous displays. To gain support for additional displays, you would have to add graphics adapters or combine multiple graphics processing units (GPUs) onto a single adapter. Both of these options come wrapped in complexity and cost.

Today, HP and ATI™ have a better alternative: a single graphics card that supports up to five simultaneous displays.

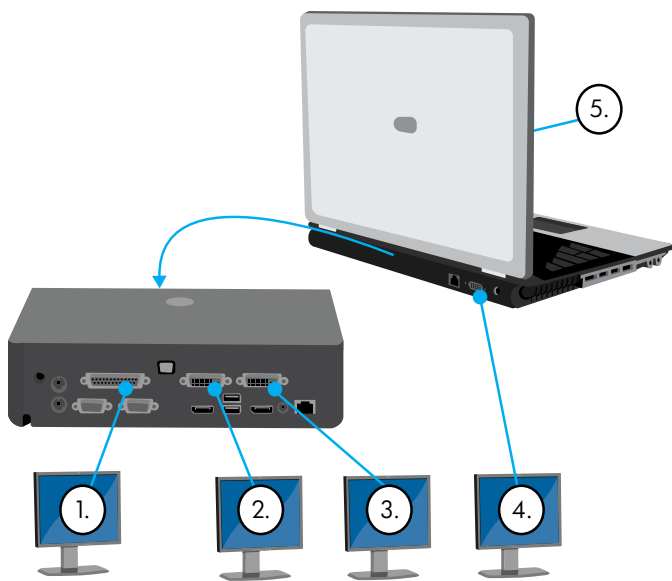


## IMMERSE YOURSELF IN A MASSIVE WORKSPACE.

With the arrival of ATI Eyefinity technology from AMD, using up to five monitors is now an affordable option on HP EliteBook Mobile Workstations. This powerful combination gives you complete visual freedom and ample room to view lots of diverse information simultaneously.

ATI Eyefinity is a multiple-monitor technology that delivers an immersive graphics and computing experience and supports massive desktop workspaces. With ATI Eyefinity technology and an HP Advanced Docking Station, this single GPU card can simultaneously drive up to four independent displays plus the display on your HP mobile workstation, for a total of five displays. This means you can now easily add displays to help you work faster, while maintaining the flexibility that comes with a mobile workstation.

It's the best of both worlds: three, four or five displays when you're in the office, and the freedom to take your work with you when you're on the go.



## HOW IT WORKS

By combining ATI Eyefinity technology and the ATI FirePro™ Professional Graphics from AMD on one graphics card, you can now view your entire workflow on multiple monitors, using the HP EliteBook Mobile Workstation 8540w or 8740w.

Up to five displays can be supported when the mobile workstation is connected to an optional HP Advanced Docking Station. The HP Advanced Docking Station allows you to connect monitors via DisplayPort, VGA and DVI-D ports.

To take advantage of the five-display opportunity, connect one DisplayPort connector to a port on your mobile workstation, plug two DisplayPort or DVI connectors to the docking station, and use one VGA connection to the docking station.

## USE CASES

How could a multiple-monitor solution help you? Consider these use cases:

### Financial trading

Stock traders need as much information as possible right at their fingertips. Lost seconds equate to lost money. With up to five displays, you can have the information you need—your trading software, real-time market data, trend-line charts, corporate filings, live news streams and more—right before your eyes.

Better still, there's no need to continually sync up two systems. A single mobile workstation takes care of all your needs—whether you're at your desk or working remotely.

### Digital content creation

For professional content creators, multiple monitors can help you work faster and more efficiently. You can have your modeling software on one screen, your video editing tools on another and a sample output on a third screen.

You can keep your work right in front of you at all times, without jumping back and forth between multiple windows. And when it's time to head out the door to present your digital content, all your work is ready to go on your mobile workstation.

### Design and engineering

Engineers working with computer aided design (CAD) and computer aided manufacturing (CAM) software frequently find that switching between windows can lead to a lot of wasted time. A better solution is to use multiple displays.

Use two screens to display the model you are creating, a third screen to run software that turns your model into usable code, and a fourth screen to display photos, spreadsheets and reference documents.

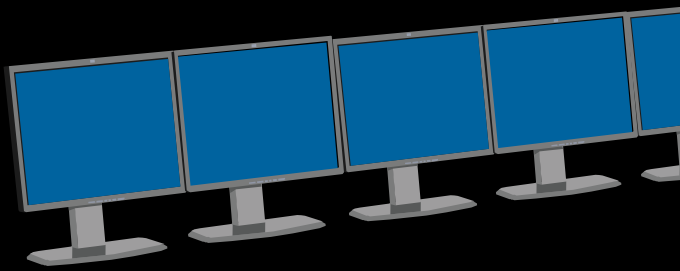
Need to see even more of your work? Display your model over four screens, arranged with two on the top and two on the bottom. With four 24-inch diagonal displays, you have the equivalent of a 48-inch diagonal monitor to display your model as one continuous image. And you still have the option of using the display on your mobile workstation for specification documents.

## KEY TAKEAWAY: THE BEST WAY TO WORK

In today's complex workflow environments, the use of three or more monitors allows you to keep multiple applications open and lots of information right in front of you. That solves your business problem and helps you work more productively.

Today, with the combination of HP EliteBook Mobile Workstations, the HP Advanced Docking station and ATI Eyefinity Technology from AMD, this "best way to work" can be your way to work.





# EYEFINITY

EXPAND THE VIEW FROM  
YOUR MOBILE WORKSTATION.

## LEVERAGE THE POWER OF LEADING TECHNOLOGIES.

ATI Eyefinity technology is among the many technological advancements that allow HP Business Notebook PCs to deliver an enhanced mobile computing experience. Collectively, these innovative features help deliver the business notebooks that professionals around the world have come to expect from HP.

In short, ATI Eyefinity and HP EliteBook Mobile Workstations keep you going wherever business takes you.

To learn more, visit [www.hp.com/go/mobileworkstations](http://www.hp.com/go/mobileworkstations).

AMD Eyefinity  
MULTI-DISPLAY TECHNOLOGY

1. IDC White Paper, Sponsored by AMD, Driving Productivity with Multiple Monitors, Doc.#222735, April 2010.

© Copyright 2010 Hewlett-Packard Development Company, L.P. The information contained herein is subject to change without notice. The only warranties for HP products and services are set forth in the express warranty statements accompanying such products and services. Nothing herein should be construed as constituting an additional warranty. HP shall not be liable for technical or editorial errors or omissions contained herein.

Advanced Micro Devices, Inc. All rights reserved. AMD, the AMD Arrow logo, ATI, the ATI logo, FirePro and combinations thereof are trademarks of Advanced Micro Devices, Inc.

4AA2-4121ENW, October 2010

